

Inoculant for improved aerobic stability

Reduce Yeast Reduce Mold

+ *L. buchneri* for improved feedout and bunk life

Contact us today!
Telephone 800-759-7569
ecosylproducts@volac.com | www.ecosyl.com

Top 15 countries selling dairy products to the U.S.

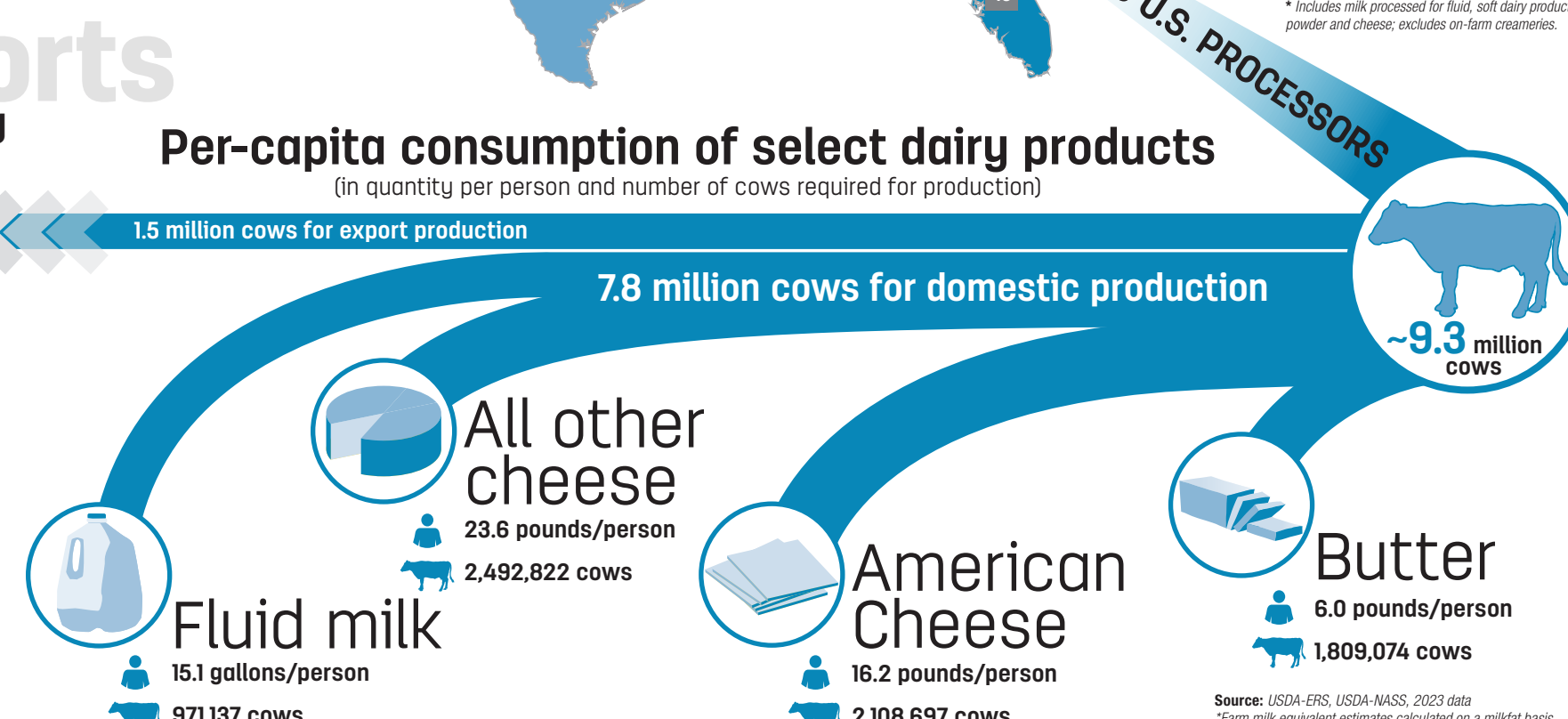
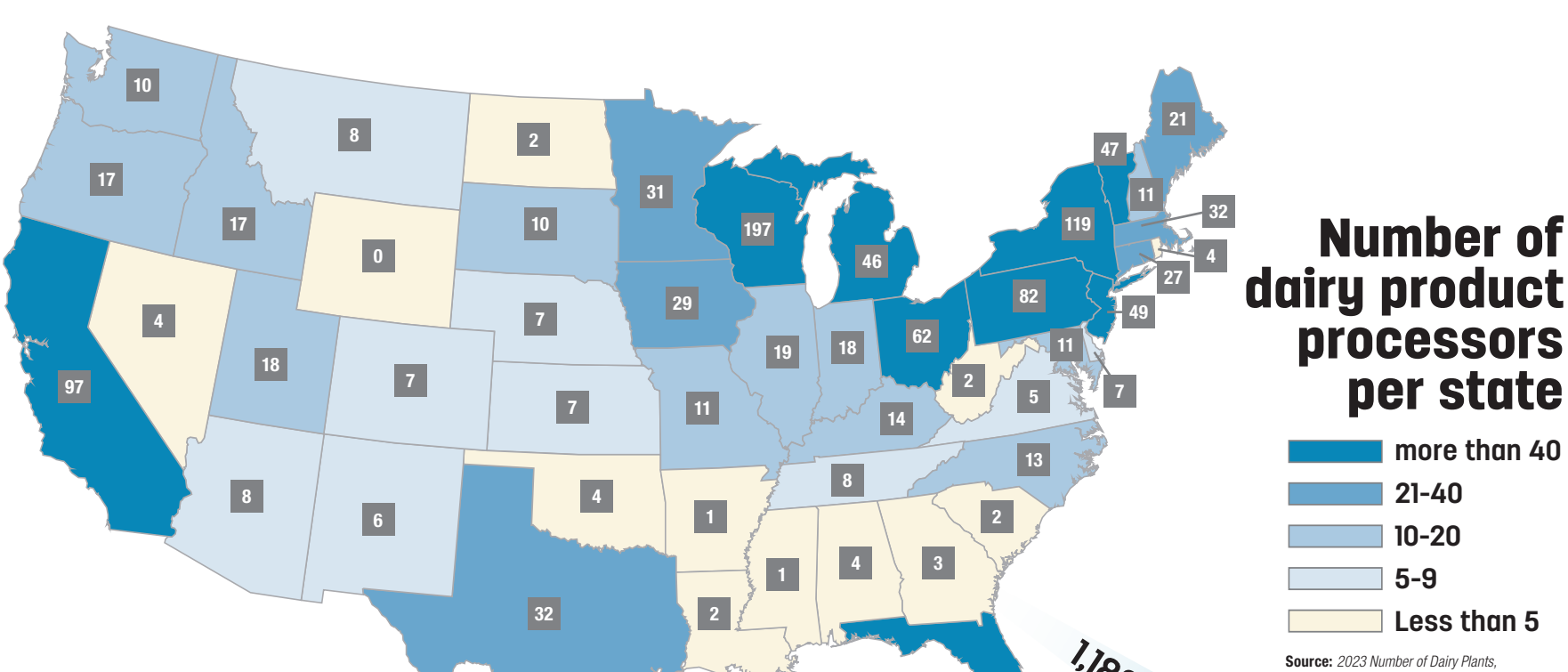
Rank	Country	2024 Imports (in thousands of dollars)
1	Ireland	889,743
2	New Zealand	791,652
3	Italy	663,108
4	Canada	545,890
5	France	408,828
6	Mexico	396,488
7	Netherlands	288,133
8	United Kingdom	195,356
9	Spain	187,242
10	Denmark	185,389
11	Switzerland	145,011
12	Germany	141,743
13	Greece	84,451
14	Nicaragua	72,046
15	Singapore	59,510

IMPROVE MILK & COMPONENT PERFORMANCE WITH QLF

SUGAR SUPPLEMENTATION INCREASES VALUE OF MILK COMPONENTS

A meta-analysis by independent scientists found that dietary sugar supplementation increased milk fat and protein yields with the optimal response being observed when total dietary sugar is 7% of DMI. Cows producing more than 74 pounds of milk had 0.18 pounds increase of milk fat, 0.2 pounds increase of milk protein, and 4.7 pounds increase of 3.5% FCM. QLF liquid supplements provide dietary sugar, and help improve feed intake, milk and component production.

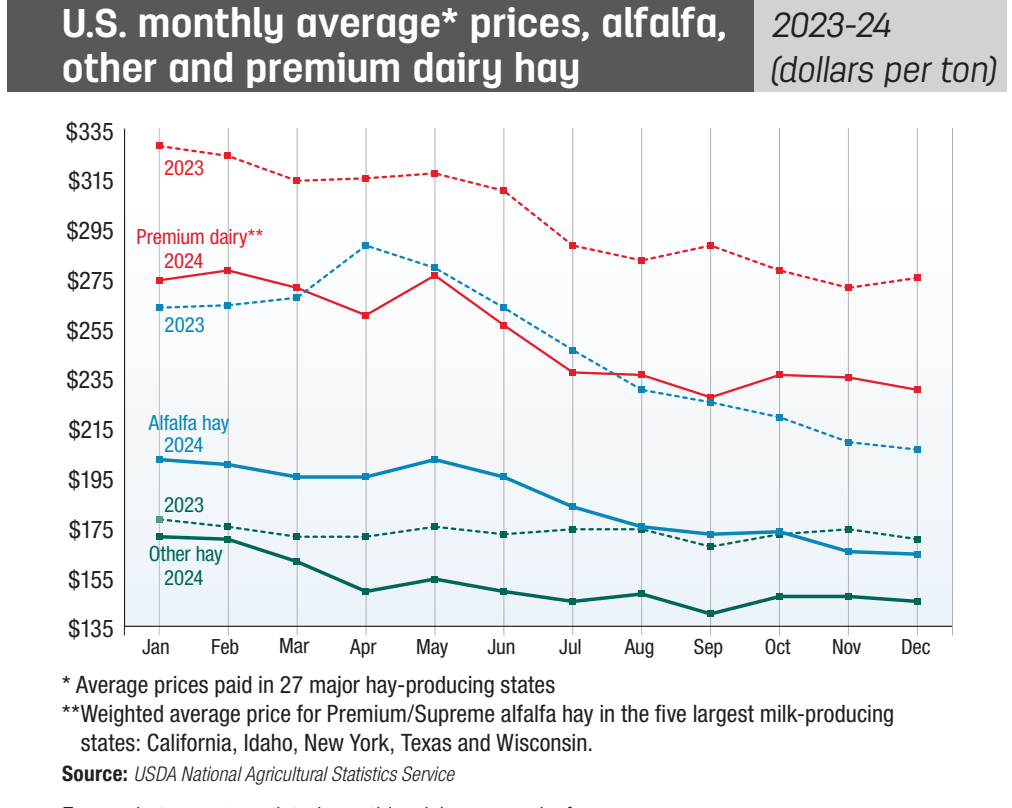
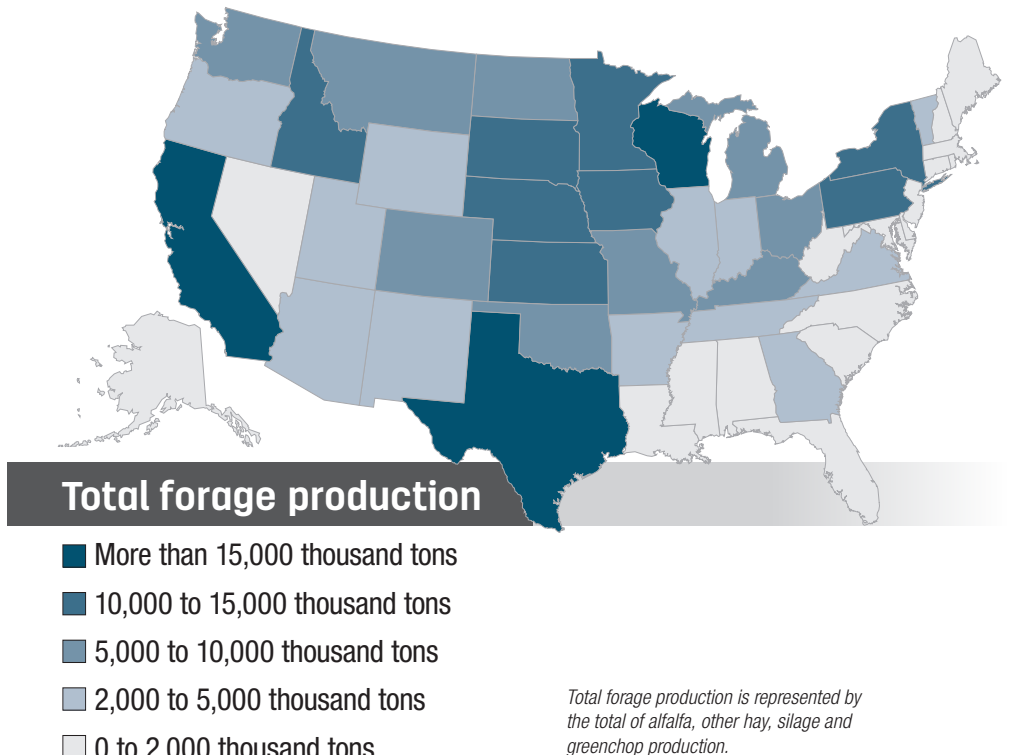
QLF QUALITY LIQUID FEEDS
www.qlf.com



Now That's FRESH

Ensure your cows have clean, fresh water all year long with a Ritchie automatic waterer. We have options for every herd, in every climate.

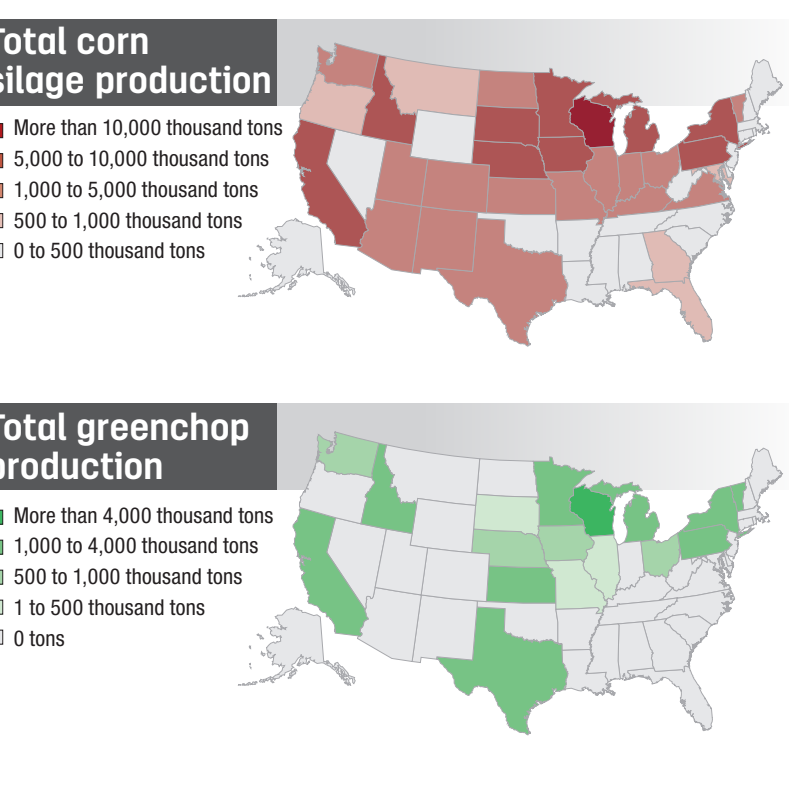
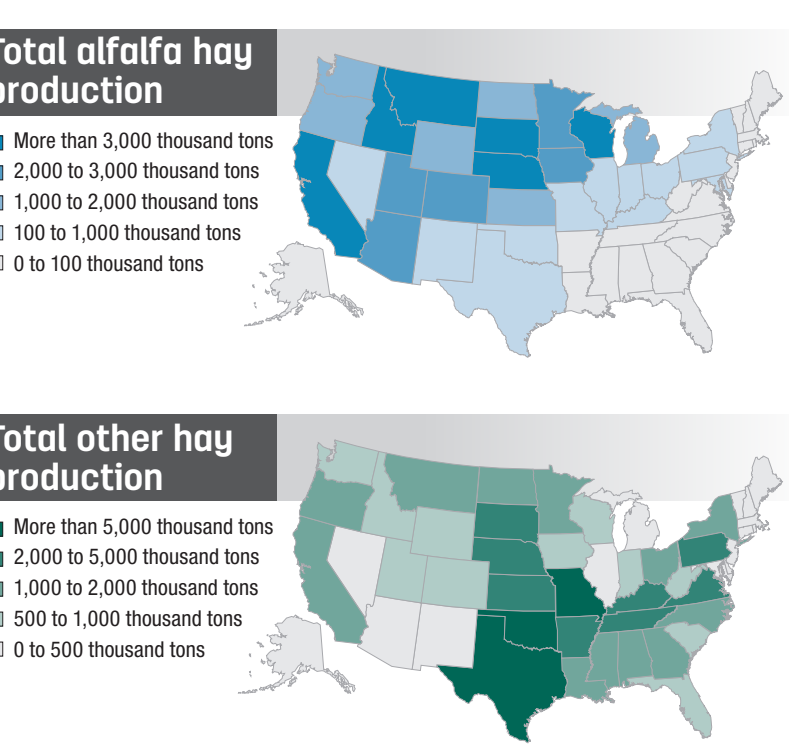
Ritchie Fresh Water For Life™
See them at ritchiefount.com.



Now That's FRESH

Ensure your cows have clean, fresh water all year long with a Ritchie automatic waterer. We have options for every herd, in every climate.

Ritchie Fresh Water For Life™
See them at ritchiefount.com.



WE HAVE THE FATS

INCREASED ENERGY FOR HIGH-YIELDING COWS
 ENHANCE RUMEN FUNCTION AND FEED EFFICIENCY
 IMPROVE REPRODUCTIVE HEALTH

Scan the QR code for more information www.energyfeeds.com

Annual milk production declined again in 2024

Progressive Dairy Editor Audrey Schmitz

It was a year of mixed dairy numbers in 2024. Milk prices and income margins improved from 2023, but total milk production and average cow numbers were down from a year earlier. With fewer dairy cows and heifers, prices for replacements set new record highs. Attrition and consolidation remained a long-term trend among U.S. dairy farms licensed to sell milk.

On a percentage basis, year-over-year declines were fairly steady across the U.S., but 86% of the decline in herd numbers occurred in the Midwest and East regions. Wisconsin remains the nation's leader in the number of herds, at 5,520, but declined by 400 in 2024. Herd numbers were down a combined 315 in Minnesota and New York, and down 90 in Pennsylvania.

U.S. milk production

U.S. milk production fell to 225.868 billion pounds in 2024, down 443 million pounds from 2023. Annual milk production had exceeded year-earlier totals for most of the past quarter-century, down only in 2001, 2009 and 2023.

Seventeen states registered annual milk production increases during 2024, led by Texas and South Dakota. Offsetting those gains, 28 states yielded production declines compared with 2022, led by New Mexico and California.

State ranking

Based on annual milk production, there were several minor changes in major dairy state rankings compared to 2023. Texas moved ahead of Idaho at 3-4, Washington and Iowa moved ahead to 9 and 10, respectively, while New Mexico fell two positions to 11. South Dakota moved ahead to 14 while Arizona and Indiana fell to 15 and 16 respectively. Vermont moved ahead of Oregon at 18-19 and Florida moved ahead of Georgia at 21-22.

UNITED ANIMAL HEALTH

GOT PATHOGENS? WE'VE GOT ANSWERS.

COMBATING COINFECTIONS REQUIRES A MULTI-PRONGED APPROACH

Pathkinox surveillance by United Animal Health reveals that 58% of cows with clinical symptoms carry multiple pathogens. These coinfections heighten disease risk and severity, especially under stress, leading to health and production losses.

Watch the Webinar: UnitedANH.com/CowHealth

U.S. dairy industry 15-year overview

Year	Total milk production (in millions of lbs)	Number of cows (in thousands)	Milk per cow (lbs per year)	Licensed dairy herds	Average herd size
2010	192,848	9,119	21,148	53,132	172
2011	196,164	9,194	21,336	51,291	179
2012	200,537	9,233	21,720	49,281	187
2013	201,231	9,224	21,816	46,975	196
2014	206,054	9,257	22,259	44,809	207
2015	208,597	9,314	22,396	43,534	214
2016	212,405	9,325	22,778	41,819	223
2017	215,466	9,392	22,941	40,219	234
2018	217,568	9,398	23,150	37,468	251
2019	218,441	9,337	23,395	34,207	273
2020	223,220	9,388	23,777	31,657	297
2021	226,293	9,449	23,949	29,842	317
2022	226,416	9,400	24,087	27,932	337
2023	226,311	9,384	24,117	26,245	358
2024	225,868	9,342	24,178	24,811	377

Milk per cow (lbs of milk)

Top 10	Value
Michigan	27,680
Wyoming	27,578
Texas	25,932
Colorado	25,892
New York	25,559
Wisconsin	25,493
Idaho	25,370
Nevada	25,097
Nebraska	24,940
Iowa	24,749

Number of licensed herds

Top 10	Value
Wisconsin	5,520
Pennsylvania	4,850
New York	2,880
Minnesota	1,690
Ohio	1,395
California	995
Michigan	845
Iowa	705
Indiana	685
Vermont	490

Dairy receipts as a % of state's total farm receipts

Top 10	Value
Vermont	59%
New York	49%
Wisconsin	40%
Idaho	32%
New Mexico	31%
Pennsylvania	24%
Michigan	21%
Arizona	18%
New Hampshire	17%
Utah	17%

UNITED ANIMAL HEALTH

GOT PATHOGENS? WE'VE GOT ANSWERS.

COMBATING COINFECTIONS REQUIRES A MULTI-PRONGED APPROACH

Pathkinox surveillance by United Animal Health reveals that 58% of cows with clinical symptoms carry multiple pathogens. These coinfections heighten disease risk and severity, especially under stress, leading to health and production losses.

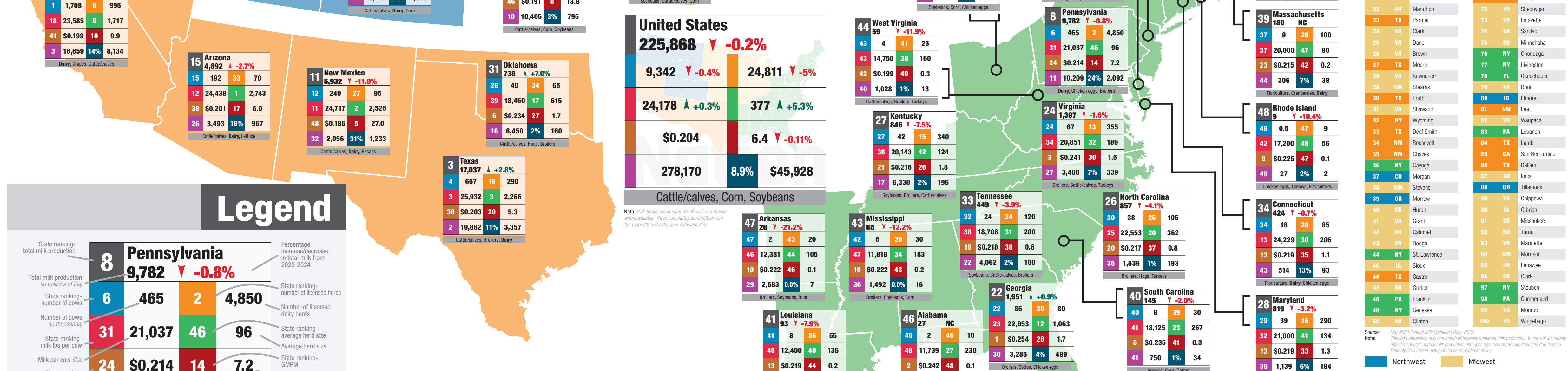
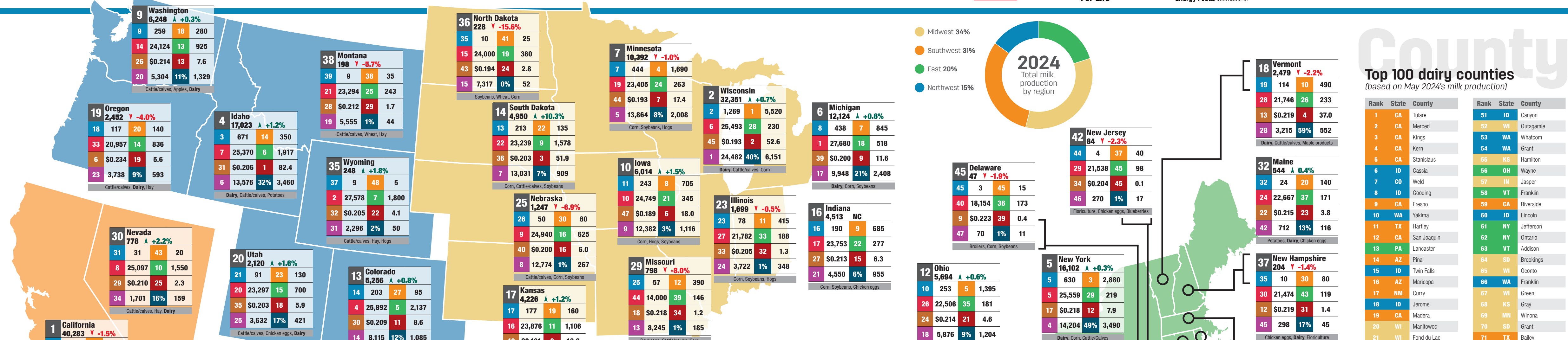
Watch the Webinar: UnitedANH.com/CowHealth

2024 U.S. dairy statistics



10-year changes by state

State rank - total milk production	State	Total milk production (in millions of lbs)	Total milk production (in millions of lbs)	Change in total milk from 2014-2024	Number of cows (1,000 head)	Number of cows (1,000 head)	Change in number of cows 2014-2024	Milk per cow (lbs. per year)	Milk per cow (lbs. per year)	Change in milk per cow 2014-2024	Number of licensed dairy herds	Number of licensed dairy herds	Change in licensed dairy herds from 2014-2024	Average herd size	Average herd size	Change in average herd size from 2014-2024
		2014	2024		2014	2024		2014	2024		2014	2024		2014	2024	
1	California	42,339	40,283	-2,056	1,780	1,708	-72	23,786	23,585	-201	1,485	995	-490	1,199	1,717	518
2	Wisconsin	27,955	32,351	4,556	1,271	1,269	-2	21,869	25,493	3,624	10,290	5,520	-4,770	124	230	106
3	Texas	10,310	17,037	6,727	463	657	194	22,268	25,932	3,664	440	290	-150	1,052	2,266	1,213
4	Idaho	13,873	17,023	3,150	575	671	96	24,127	25,370	1,243	530	350	-180	1,085	1,917	832
5	New York	13,730	16,102	2,372	615	630	15	22,325	25,559	3,234	4,950	2,880	-2,070	124	219	95
6	Michigan	9,609	12,124	2,515	390	438	48	24,638	27,680	3,042	1,950	845	-1,105	200	518	318
7	Minnesota	9,127	10,392	1,265	460	444	-16	19,841	23,405	3,564	3,605	1,690	-1,915	128	263	135
8	Pennsylvania	10,664	9,782	-882	530	465	-65	20,121	21,037	916	6,810	4,850	-1,960	72	96	24
9	Washington	6,576	6,248	-328	273	259	-14	24,088	24,124	36	480	280	-200	569	925	356
10	Iowa	4,647	6,014	1,367	207	243	36	22,449	24,749	2,300	1,370	705	-665	151	345	194
11	New Mexico	8,105	5,932	-2,173	323	240	-83	25,093	24,717	-376	150	95	-55	2,485	2,526	42
12	Ohio	5,425	5,684	269	267	253	-14	20,318	22,506	2,188	2,810	1,395	-1,415	95	181	86
13	Colorado	3,593	5,256	1,663	144	203	59	24,951	25,892	941	120	95	-25	1,200	2,137	937
14	South Dakota	2,110	4,950	2,840	97	213	116	21,753	23,239	1,486	255	135	-120	380	1,578	1,197
15	Arizona	4,703	4,692	-11	193	192	-1	24,368	24,438	70	100	70	-30	1,930	2,743	813
16	Indiana	3,892	4,513	621	178	190	12	21,865	23,753	1,888	1,265	685	-580	141	277	137
17	Kansas	3,114	4,226	1,112	141	177	36	22,085	23,876	1,791	315	160	-155	448	1,106	659
18	Vermont	2,666	2,479	-187	132	114	-18	20,197	21,746	1,549	880	490	-390	150	233	83
19	Oregon	2,550	2,452	-98	124	117	-7	20,565	20,957	392	250	140	-110	496	836	340
20	Utah	2,184	2,120	-64	95	91	-4	22,989	23,297	308	210	130	-80	452	700	248
21	Florida	2,508	2,030	-478	123	99	-24	20,390	20,505	115	130	45	-85	946	2,200	1,254
22	Georgia	1,691	1,951	260	81	85	4	20,877	22,953	2,076	230	80	-150	352	1,063	710
23	Illinois	1,850	1,699	-151	94	78	-16	19,681	21,782	2,101	690	415	-275	136	188	52
24	Virginia	1,779	1,397	-382	93	67	-26	19,129	20,851	1,722	630	355	-275	148	189	41
25	Nebraska	1,195	1,247	52	54	50	-4	22,130	24,940	2,810	190	80	-110	284	625	341
26	North Carolina	961	857	-104	46	38	-8	20,891	22,553	1,662	250	105	-145	184	362	178
27	Kentucky	1,002	846	-156	63	42	-21	15,905	20,143	4,238	720	340	-380	88	124	36
28	Maryland	987	819	-168	50	39	-11	19,740	21,000	1,260	450	290	-160	111	134	23
29	Missouri	1,383	798	-585	89	57	-32	15,539	14,000	-1,539	1,230	390	-840	72	146	74
30	Nevada	690	778	88	29	31	2	23,793	25,097	1,304	20	20	NC	1,450	1,550	100
31	Oklahoma	726	738	12	40	NC	NC	18,150	18,590	440	170	65	-105	235	615	380
32	Maine	599	544	-55	30	24	-6	19,967	22,667	2,700	280	140	-140	107	171	64
33	Tennessee	745	449	-296	46	24	-22	16,196	18,708	2,512	370	120	-250	124	200	76
34	Connecticut	383	424	41	19	18	-2	20,158	24,229	4,071	130	85	-45	146	206	60
35	Wyoming*	130	248	119	6	9	3	21,583	27,578	5,995	10	5	-5	600	1,800	1,200
36	North Dakota	324	228	-96	16	10	-7	20,250	24,000	3,750	100	25	-75	160	380	220
37	New Hampshire	282	204	-78	14	10	-5	20,143	21,474	1,331	120	80	-40	117	119	2
38	Montana	301	198	-103	14	9	-6	21,500	23,294	1,794	70	35	-35	200	243	43
39	Massachusetts	233	180	-53	13	9	-4	17,923	20,000	2,077	150	100	-50	87	90	3
40	South Carolina	263	145	-118	16	8	-8	16,438	18,125	1,687	80	30	-50	200	267	67
41	Louisiana	204	93	-111	15	8	-8	13,600	12,400	-1,200	120	55	-65	125	136	11
42	New Jersey	127	84	-43	7	4	-3	18,143	21,538	3,395	70	40	-30	108	98	-10
43	Mississippi	188	65	-123	13	6	-8	14,462	11,818	-2,644	85	30	-55	153	183	30
44	West Virginia	140	59	-81	9	4	-5	15,556	14,750	-806	75	25	-50	120	160	40
45	Delaware	97	47	-50	4	3	-2	20,104	18,154	-1,950	40	15	-25	120	173	53
46	Alabama	109	27	-82	8	2	-6	13,625	11,739	-1,886	40	10	-30	200	230	30
47	Arkansas	96	26	-70	7	2	-5	13,714	12,381	-1,333	75	20	-55	93	105	12
48	Rhode Island*	17	9	-8	0.9	0.5	NC	19,000	17,200	-1,800	15	9	-6	60	56	-4
U.S. total		206,054	226,364	+19,814	9,224	9,386	+162	22,259	24,117	+1,919	44,809	26,290	-19,998	196	357	+161



Legend

State ranking - total milk production

Total milk production (in millions of lbs)

State ranking - number of cows

Number of cows (in thousands)

State ranking - milk lbs per cow

Milk per cow (lbs)

State ranking - 2023 Value of milk per lb.

2023 Value of milk per lb.

State ranking - all forage production

All forage production (in thousands of tons)

State's 2023 top 3 farm commodities

Percentage increase/decrease in total milk from 2023-2024

State ranking - number of licensed dairy herds

Number of licensed dairy herds

State ranking - average herd size

Average herd size

State ranking - GMPM

Gallons of milk per person per month (GMPM)

2023 dairy receipts as a percentage of state's total farm receipts

2023 dairy receipts annual total (in millions of dollars)

Source: February 2023 Milk Production Report, USDA
 Statistical ties are represented by the same numerical ranking.

For reprints, contact Progressive Publishing at (208) 324-7513
 or download the latest copies of our dairy, forage or beef stats online at progressivepublish.com/stats